



INTRODUCING BYZANCE FOUNDRY RESERVE

2019 MEINL CYMBAL GUIDE

2	WHAT'S NEW!
4	Byzance Foundry Reserve
6	Six Degrees of Darkness
8	Byzance Traditional
10	Byzance Vintage
12	Byzance Jazz
14	Byzance Extra Dry
16	Byzance Dark
18	Byzance Brilliant
20	The Artist Concept Models
22	Pure Alloy
24	The World of Classics
26	Classics Custom Dark
28	Classics Custom Brilliant
30	Classics Custom Extreme Metal
32	Classics
34	Generation X
36	MCS
38	HCS
40	Drum Gear
40	Cymbal Bags
41	Cymbal Cases, Stick Bags & Holders
42	Practice Pads
43	Drum Rugs
44	Drum Honey, Cymbal Tuners
45	Backbeat Pro Tambourines, Ching Rings, Bacon
46	Cymbal Mutes, Drummer Gloves, Dynamic Pedal Pad
47	Hardware
48	Tables, Microphone Clamps
49	Cymbal Cleaners, Cymbal Gloves, Cymbal Clock
50	Candela Percussion Cymbals
52	Symphonic Cymbals
54	Marching Cymbals
56	MEINL Online

WHAT'S NEW?

MEINL is known for having the absolute widest selection of cymbal sounds and effects. What you see on this page adds to that ever-expanding tradition.

14" and 15" Hihats

The Byzance Foundry Reserve hihats feature a thin top over a medium-thin bottom. This weight combination produces a versatile hihat that works both in the studio and on stage for many situations, especially where touch and nuance are required. The stick response is warm, fat, and has a nice sizzle when slightly opened. The foot chick is strong and well-balanced with full tonality. Great for a wide variety of gigs.

18" Crash

The Byzance Foundry Reserve crash is unique when compared to our other 18" Byzance crashes. It features a very dark and explosive response that quickly decays and, additionally, can be used as a light ride cymbal for drummers looking to maximize a minimal cymbal set. This comes from the combination of extensive hand-hammering in addition to the fully lathed surface. The medium weight gives the crash a full-bodied sound at its apex.

20" & 22" Rides and Light Rides

The Byzance Foundry Reserve rides are very versatile cymbals featuring a dry stick-attack note followed by a complex character carried along in a dark wash. Starting with the extensive hand-hammering, the cymbalsmith forms the low fundamental pitch and builds up to a rich character. The fully lathed surface gives the stick definition a bright attack followed by a lush wash of undertones. They provide enough body for a strong stick definition to drive a band, but are thin enough to open for thunderous crashes too. The light rides respond easily to mallets too.



BYZANCE

xx FOUNDRY RESERVE xx

MADE IN TURKEY



Splash add-ons
8" & 12" Splashes, 12" Trash Splash

The new 8" and 12" splashes, like the 10" model, offer quick and cutting accents while the new 12" trash splash offers a punchy attack with shorter sustain. Add one of these to a china or crash for a unique stack sound.

Crash add-ons
14", 16" and 18" Trash Crashes

The new 14", 16", and 18" trash crashes combine the full attack and feel of a crash cymbal with the extremely quick decay and trashy roar of a china. The trash crashes will sound great in combination with our regular dark crashes for a layered crash sound.

Crash add-on
17" Crash

The new 17" dark crash features a full frequency range of fairly loud and cutting attack with a medium sustain. This model completes the extensive line-up of crashes from 16" to 21" in the dark series, giving you many choices to dial in your sound.

Hihat add-on
16" Hihat

The new 16" hihat feature a medium top over a medium-heavy bottom for a full-bodied stick definition rounded out by a warm and dark undertone. When played open, they have a loud wash and long sustain, but when closed, they will fatten up any groove.

China add-ons
16" and 18" Trash Chinas

The new 16" and 18" trash chinas feature our already dark and trashy china model but with holes added for a sharper attack and faster decay. Add one of these to your kit to expand your sound palette.

Stack add-ons
12", 16" and 18" Trash Stacks

The new 12" dark stack pairs the trash splash with a mini china while the new 16" and 18" dark stacks pair a trash crash and trash china of the same size. These combinations work great as stacks or as individual effect cymbals, giving you multiple options. The smaller 12" stack has a cutting, short attack with a higher pitch while the 16" and 18" have a fuller, deeper attack at relatively lower pitches. Choose the one (or two) that best fit your music.

CLASSICS

— CUSTOM —

DARK SERIES



BYZANCE

xx FOUNDRY RESERVE xx

MADE IN TURKEY



METAL



SHAPING
Hand Hammered

LATHE
Wide Blade

FINISH
Traditional

SOUND
Complex, Dark

Timeless Expression

The NEW Byzance Foundry Reserve collection is a limited selection of cymbals that showcases the stunning, sonically rich works of art that our cymbalsmiths create with layers of tonality and nuance; however, that is only half of the beauty, as they are visually striking from the one-of-a-kind hand-hammered marks. The extra hammering creates many deep craters across the surface. When this hammering is coupled with the fully lathed top and bottom, it produces a clear, dry stick-attack note over a lush bed of low undertones – otherwise known as "the roar."

NEW! **HIHATS**

14" B14FRH
15" B15FRH



NEW! **CRASH**

18" B18FRC



NEW! **RIDES**

20" B20FRR
22" B22FRR

Light Rides
20" B20FRLR
22" B22FRLR



STYLES

Jazz, Fusion, Funk, R&B, Studio

TO CLEAN

MEINL Cymbal Cleaner

Byzance

SIX DEGREES OF DARKNESS

TRADITIONAL

VINTAGE

JAZZ



**EXTRA
DRY**

DARK

BRILLIANT



Byzance

TRADITIONAL



METAL

B20
BRONZE

SHAPING

Hand Hammered

LATHE

Narrow Blade

FINISH

Traditional

SOUND

Mid-Bright, Warm

Dark Warmth

Their hammered and lathed surfaces, warm sounds and selection of models may be very traditional, but these cymbals are the ultimate choice when it comes to versatility. Rides with a buttery-soft feel. Crashes that range from dark and shimmering with thin models, to powerful and focused with heavier ones. Traditional tone and sonic individuality come together in each of these cymbals.

SPLASHES

- 6" B6S
- 8" B8S
- 10" B10S
- 12" B12S



CHINAS

- 14" B14CH
- 16" B16CH
- 18" B18CH
- 20" B20CH
- 22" B22CH



FLAT CHINA

- 18" B18FCH



MINI HAT

- 10" B10MH



HIHATS

Thin

- 14" B14TH

Medium

- 13" B13MH
- 14" B14MH
- 15" B15MH
- 16" B16MH

Heavy

- 14" B14HH



CRASHES

Thin

- 14" B14TC
- 15" B15TC
- 16" B16TC
- 17" B17TC
- 18" B18TC

Medium Thin

- 16" B16MTC
- 17" B17MTC
- 18" B18MTC
- 19" B19MTC

Medium

- 16" B16MC
- 18" B18MC
- 20" B20MC
- 21" B21MC
- 22" B22MC



EXTRA THIN HAMMERED CRASHES

- 18" B18ETHC
- 20" B20ETHC



POLYPHONIC RIDE

- 21" B21POR



RIDES

Medium

- 20" B20MR
- 21" B21MR
- 22" B22MR
- 23" B23MR
- 24" B24MR

Heavy

- 20" B20HR
- 21" B21HR
- 22" B22HR
- 23" B23HR



STYLES

Rock, Pop, Fusion, Jazz, Funk, R&B, Reggae, Studio, World

TO CLEAN

MEINL Cymbal Cleaner

Byzance

VINTAGE



METAL

B20
BRONZE

SHAPING

Hand Hammered

LATHE

Narrow Blade

FINISH

Sandblasted

SOUND

Dark, Dry

Dark Shimmer

The low, dark and somewhat dry washy sound of these models – most of which have a matte sandblasted finish – isn't too soft or too loud. With its great stick definition and short sustain, you can dig into Byzance Vintage for total control at all times. It has a sound that fits into any music that isn't in the upper decibel levels.

SPLASH

10" B10VS



TRASH SPLASH

10" B10TRS



TRASH CRASHES

16" B16TRC
18" B18TRC
20" B20TRC



VINTAGE CRASHES

16" B16VC
18" B18VC
20" B20VC
22" B22VC



VINTAGE PURE HIHATS

14" B14VPH
15" B15VPH
16" B16VPH



VINTAGE PURE CRASHES

18" B18VPC
20" B20VPC



VINTAGE PURE RIDES

20" B20VPR
22" B22VPR
Light Rides
20" B20VPLR
22" B22VPLR



EQUILIBRIUM CHINA

20" B20EQCH

Matt Garstka's
signature cymbal



BENNY GREB SIGNATURE SAND MODELS

SAND HATS

14" B14SAH
16" B16SAH **NEW!**



SAND CRASHES

Thin
18" B18SATC
Medium
18" B18SAMC



SAND CRASH-RIDE

22" B22SACR



SAND RIDES

20" B20SAR
22" B22SAR



SAND CYMBAL SET

BV-141820SA
14" Sand Hat
18" Sand Thin Crash
20" Sand Ride

STYLES

Pop, Fusion, Jazz, Funk, R&B, Reggae, Studio, World, Electro

TO CLEAN

Not recommended

Byzance

JAZZ

Dark Tonality

Byzance Jazz. The touch and tone of these cymbals, with their soft, buttery, sink-your-stick feel and low, dark tonalities, add up to a very personalized sound. A closer look at the hammering on some models reveals large and deep dimpling that boosts dryness and darkness.



MIPA Winner
Byzance Jazz

METAL

B20
BRONZE

SHAPING
Hand Hammered

LATHE
Narrow Blade

FINISH
Traditional

SOUND
Dark, Tonally Complex

TRADITION HIHAT

14" B14TRH



TRADITION CRASH

Tradition Light
18" B18TRLC



TRADITION RIDES

20" B20TRR
22" B22TRR

Light Rides
20" B20TRLR
22" B22TRLR



TRADITION FLAT RIDE

22" B22TRFR



NUANCE RIDE

21" B21NUR

Ralph Peterson's
signature cymbal



SYMMETRY RIDE

22" B22SYR

Ralph Peterson's
signature cymbal



MONOPHONIC RIDE

22" B22MOR



SPLASH

10" B10JS



HIHATS

Thin

13" B13JTH
14" B14JTH
15" B15JTH



CRASHES

Extra Thin

16" B16JETC
17" B17JETC
18" B18JETC



Thin

16" B16JTC
17" B17JTC
18" B18JTC
20" B20JTC

Medium Thin

16" B16JMTC
17" B17JMTC
18" B18JMTC
20" B20JMTC

CHINA RIDE

22" B22JCHR



RIDES

Extra Thin

20" B20JETR
22" B22JETR

Thin

20" B20JTR
22" B22JTR

Medium Thin

20" B20JMTR
22" B22JMTR

Medium

20" B20JMR
22" B22JMR



BIG APPLE RIDES

20" B20JBAR
22" B22JBAR



CLUB RIDES

20" B20JCR
22" B22JCR



Wolfgang Haffner's
signature cymbals

STYLES

Jazz, Funk, Reggae, Studio, World, Electro

TO CLEAN

MEINL Cymbal Cleaner

Byzance

EXTRA DRY



METAL

B20
BRONZE

SHAPING
Hand Hammered

LATHE
None

FINISH
Raw

SOUND
Dark, Extra Dry

Dark Definition

Living up to their name, these cymbals are extremely dry, with low-pitched, trashy sounds and short sustain. The raw unlathed surfaces and extensive hand hammering suggest that their sound might be loud and fierce. In reality, the Extra Dry series reveals its dark, earthy tones and comes to life when played at lower volumes.

SPLASHES

- 10" B10EDS
- 12" B12EDS



CHINAS

- 16" B16EDCH
- 18" B18EDCH
- 20" B20EDCH



HIHATS

Medium Thin

- 15" B15EDMTH
- 16" B16EDMTH

Medium

- 13" B13EDMH
- 14" B14EDMH



CRASHES

Thin

- 16" B16EDTC
- 17" B17EDTC
- 18" B18EDTC
- 19" B19EDTC
- 20" B20EDTC



RIDES

Thin

- 20" B20EDTR
- 22" B22EDTR

Medium

- 20" B20EDMR
- 22" B22EDMR



TRANSITION RIDE

- 21" B21TSR

Mike Johnston's
signature cymbal



DUAL SPLASH

- 10" B10DUS



DUAL HIHAT

- 15" B15DUH



DUAL CRASHES

- 16" B16DUC
- 18" B18DUC



DUAL CRASH-RIDES

- 20" B20DUCR
- 22" B22DUCR



STYLES

Jazz, Funk, R&B, Studio, Electro

TO CLEAN

MEINL Cymbal Cleaner

Byzance

DARK



METAL



SHAPING
Hand Hammered

LATHE
Abraded

FINISH
Dark

SOUND
Mid-Dark, Earthy

Dark Intensity

Their sound is dark, and so is their oven-blackened look. Byzance Dark models are intense, with responses ranging from the defined sticking of the rides, to the short, punchy bursts of the crashes. Their unique sonic qualities are ideal for music where dark tone and feel are at the top of the 'must have' list.

SPLASHES

- 8" B8DAS
- 10" B10DAS



CHINA

- 18" B18DACH



HIHATS

- 13" B13DAH
- 14" B14DAH
- 15" B15DAH



SPECTRUM HIHATS

- 13" B13SH
- 14" B14SH



Rodney Holmes' signature cymbals

CRASHES

- 16" B16DAC
- 17" B17DAC
- 18" B18DAC
- 20" B20DAC



RIDES

- 20" B20DAR
- 21" B21DAR
- 22" B22DAR



BIG APPLE DARK RIDES

- 20" B20BADAR
- 22" B22BADAR
- 24" B24BADAR



RAW BELL RIDES

- 20" B20RBR
- 22" B22RBR



SPECTRUM RIDE

- 22" B22SR

Rodney Holmes' signature cymbal



STYLES

Pop, Fusion, Jazz, Funk, R&B, Reggae, Studio, World, Electro

TO CLEAN

MEINL Cymbal Cleaner

Byzance

BRILLIANT



METAL

B20
BRONZE

SHAPING

Hand Hammered

LATHE

Narrow Blade

FINISH

Brilliant

SOUND

Mid-Bright, Tonally Rich

Dark Brightness

Though 'Brilliant' refers to its finish, this series actually takes the traditional Byzance and darkens its sound. This darker sound is due to a finishing process that limits the high end as the cymbal is buffed to its brilliant look. Heavier models penetrate with directness, thinner ones shimmer with warmth. The overall combination of dark tonality and warm spread make Byzance Brilliant a great choice for everything from funk and fusion to rock.

HEAVY HAMMERED HIHAT

14" B14HHH-B



HEAVY HAMMERED CHINAS

18" B18HHCH-B

20" B20HHCH-B



HEAVY HAMMERED CRASHES

18" B18HHC-B

20" B20HHC-B

22" B22HHC-B



HEAVY HAMMERED RIDE

22" B22HHR-B



PURE METAL RIDE

24" B24PMR-B

Chris Adler's
signature cymbal



SPLASHES

6" B6S-B

8" B8S-B

10" B10S-B



CHINAS

14" B14CH-B

16" B16CH-B

18" B18CH-B

20" B20CH-B



HIHATS

Medium

13" B13MH-B

14" B14MH-B



FAST HIHATS

13" B13FH

14" B14FH

Thomas Lang's
signature cymbals



SERPENTS HIHATS

13" B13SH-B

14" B14SH-B

Derek Roddy's
signature cymbals



CRASHES

Thin

14" B14TC-B

15" B15TC-B

16" B16TC-B

17" B17TC-B

18" B18TC-B



Medium Thin

16" B16MTC-B

17" B17MTC-B

18" B18MTC-B

19" B19MTC-B

Medium

16" B16MC-B

18" B18MC-B

20" B20MC-B

RIDES

Medium

20" B20MR-B

21" B21MR-B

22" B22MR-B



Heavy

20" B20HR-B

22" B22HR-B

SERPENTS RIDE

21" B21SR-B

Derek Roddy's
signature cymbal



STYLES

Rock, Pop, Fusion, Funk, R&B, Reggae, Studio

TO CLEAN

MEINL Cymbal Polish

The Artist

Benny Greb

CRASHER HATS



A stylized signature of Benny Greb in black ink.



Top



Bottom

8"/8" **AC-CRASHER**
With X-Hat Auxiliary Hihat Arm

Matt Halpern

DOUBLE DOWN STACK



Top side



Bottom side

17"/18" **AC-DOUBLEDOWN**

A stylized signature of Matt Halpern in black ink.



Anika Nilles

DEEP HATS



A stylized signature of Anika Nilles in black ink.



Top side



Bottom side

18"/18" **AC-DEEP** With X-Hat Auxiliary Hihat Arm

Concept Models

Matt Garstka
FAT STACK



Top side

Bottom side

18"/16" AC-FAT

Matt Garstka

Luke Holland
BULLET STACK

Luke Holland



Top side

Bottom side

12"/16" AC-BULLET

Thomas Lang
SUPER STACK



Top side

Bottom side

18"/18" AC-SUPER

Thomas Lang



MIPA Winner
Pure Alloy



METAL

SHAPING

Computerized Hammering

LATHE

Pinpoint

FINISH

Traditional

SOUND

Shimmering Clarity

Shimmering Clarity

Effortless touch and clean sound. This is MEINL Pure Alloy. A timeless voice formed with fully lathed surfaces allows them to be expressive in virtually any style. Their refined nature has two sides: polished definition met by a velvety wash that encompasses a full tonal spectrum. Shimmering, smooth sounds bounce right along with your stick to create a reactive touch that extends through all dynamic levels. These cymbals cut with agility. Blanketing their superb stick definition is a sustain that plays out with just the right amount of strength and balanced wash.



SPLASH

10" PA10S



CHINA

18" PA18CH



HIHATS

Medium

14" PA14MH

15" PA15MH



CRASHES

Medium

16" PA16MC

18" PA18MC

20" PA20MC

22" PA22MC



RIDES

Medium

20" PA20MR

22" PA22MR



STYLES

Rock, Pop, Fusion, R&B, Reggae, Studio

TO CLEAN

MEINL Cymbal Cleaner

CLARITY AND CUT

CLASSICS
— CUSTOM —
DARK SERIES

CLASSICS
— CUSTOM —
BRILLIANT SERIES



From the loud Classics, to the louder Classics Custom Brilliant and Dark to the loudest, Classics Custom Extreme Metal, this quartet of innovative cymbals is all about high-energy response. These cymbals add pure punch wherever clarity and cut are a must. Ideal for pop, rock, and the most brutal metal imaginable, all four will get you heard.



CLASSICS



CLASSICS

— C U S T O M —

DARK SERIES



METAL

B10
BRONZE

SHAPING

Pressure Point Technology &
Computerized Hammering

LATHE

Wide Blade

FINISH

Dark

SOUND

Mid-Dark, Trashy

Classics Custom Dark cymbals undergo a special finishing process that leaves the cymbals with dark and complex tones along with the clarity, cut and volume that Classics Custom is known to deliver. This same unique twist on the traditional design gives the cymbals a rich, dark appearance. Widely spaced deep hammering and additional lathing round out their tonal qualities, giving them a warmer mix of sound along with an explosive response.

CRASH-RIDE

22" CC22DACR

RIDES

20" CC20DAR
22" CC22DAR



CYMBAL SET

CCD141620
14" Dark Hi-hat
16" Dark Crash
20" Dark Ride

SPLASHES

8" CC8DAS **NEW!**
10" CC10DAS
12" CC12DAS **NEW!**

NEW!

TRASH SPLASH

12" CC12DATRS

CHINA

18" CC18DACH

NEW!

TRASH CHINAS

16" CC16DATRCH
18" CC18DATRCH

HIHATS

14" CC14DAH
15" CC15DAH
16" CC16DAH **NEW!**

CRASHES

16" CC16DAC
17" CC17DAC **NEW!**
18" CC18DAC
19" CC19DAC
20" CC20DAC
21" CC21DAC

NEW!

TRASH CRASHES

14" CC14DATRC
16" CC16DATRC
18" CC18DATRC

NEW!

TRASH STACKS

12" CC-12DASTK
16" CC-16DASTK
18" CC-18DASTK

CLASSICS

— C U S T O M —

BRILLIANT SERIES



METAL

B10
BRONZE

SHAPING

Pressure Point Technology

LATHE

None

FINISH

Brilliant

SOUND

Bright, Musical

Made with B10 bronze, Classics Custom Brilliant models pack a loud and bright punch that gets you heard clearly in every style of music. Designed to cut above the roar of guitars, these cymbals do most of the work for you, so you don't have to play as hard to be heard. With great stick response on the rides and hats, you can dig in and groove, while the crashes deliver powerful accents.

GHOST RIDE

21" CC21GR

Brann Dailor's
signature cymbal

RIDES

Medium

20" CC20MR-B

Powerful

20" CC20PR-B

22" CC22PR-B

CYMBAL SET

CC141620

14" Medium Hihat

16" Medium Crash

20" Medium Ride

BELL

8" CC8B-B

SPLASHES

8" CC8S-B

10" CC10S-B

12" CC12S-B

TRASH SPLASH

12" CC12TRS-B

CHINAS

16" CC16CH-B

18" CC18CH-B

TRASH CHINAS

16" CC16TRCH-B

18" CC18TRCH-B

HIHATS

Medium

14" CC14MH-B

15" CC15MH-B

Powerful

14" CC14PH-B

CRASHES

Medium

14" CC14MC-B

15" CC15MC-B

16" CC16MC-B

17" CC17MC-B

18" CC18MC-B

Powerful

16" CC16PC-B

18" CC18PC-B

TRASH CRASHES

16" CC16TRC-B

18" CC18TRC-B

TRASH STACKS

12" CC-12STK

16" CC-16STK

STYLES

Metal, Rock, Pop, Fusion, Studio

TO CLEAN

MEINL Cymbal Cleaner

CLASSICS CUSTOM

EXTREME METAL SERIES



METAL

SHAPING
Pressure Point Technology &
Computerized Hammering

LATHE
None

FINISH
Brilliant

SOUND
Bright, Penetrating

Brutally loud and intense, Classics Custom Extreme Metal models are totally effective when it comes to projecting through the loudest and most aggressive music there is. With jumbo-sized hammering and bristling tone, these brilliant finish cymbals deliver their potent mix of clarity and cut with ear-splitting power.



SPLASH

10" CC10EMS-B



CHINAS

16" CC16EMCH-B

18" CC18EMCH-B



HIHAT

14" CC14EMH-B



CRASHES

16" CC16EMC-B

17" CC17EMC-B

18" CC18EMC-B

19" CC19EMC-B



STACK

16"/18" CC16/18EMS-B



BIG BELL RIDE

18" CC18EMBRR-B



RIDE

20" CC20EMR-B



CYMBAL SET

CC-EM480

14" Hihat

18" Crash

20" Ride

STYLES

Metal, Rock, Pop, Fusion, Studio

TO CLEAN

MEINL Cymbal Cleaner

CLASSICS



METAL

B8
BRONZE

SHAPING
Pressure Point Technology

LATHE
Wide Blade

FINISH
Traditional

SOUND
Bright, Clear

Powered by bright, widely lathed B8 bronze, this nicely priced series is great for cutting through most volumes. With explosive crash responses and glassy ride definition, Classics models may not be as powerful as the very different Custom or Extreme Metal, but their ability to project is unquestionable.

BELLS

8"	C8BL	Low
8"	C8BM	Medium
8"	C8BH	High



SPLASHES

8"	C8S
10"	C10S
12"	C12S



CHINA SPLASH

10"	C10CS
-----	-------



CHINAS

12"	C12CH
14"	C14CH
16"	C16CH
18"	C18CH



MINI HAT

10"	C10MH
-----	-------



HIHATS

Medium
14" C14MH
Powerful
14" C14PH



SOUNDWAVE HIHATS

Medium
14" C14MSW
Powerful
14" C14PSW



CRASHES

Thin
16" C16TC
18" C18TC
Medium
14" C14MC
15" C15MC
16" C16MC
17" C17MC
18" C18MC
20" C20MC
Powerful
16" C16PC
18" C18PC



RIDES

Medium
20" C20MR
22" C22MR
Powerful
20" C20PR



CYMBAL SET

C141620
14" Medium Hihat
16" Medium Crash
20" Medium Ride



METAL Varies	SHAPING Pressure Point Technology & Computerized Hammering	LATHE Varies	FINISH Varies	SOUND Mid-Bright, Experimental
------------------------	---	------------------------	-------------------------	--

When you want something totally different – something wilder than normal – step into Generation X. There are no rules. Innovation is the reason these cymbals exist. This diverse collection of designs looks and sounds creative, even crazy, but it makes perfect sense if what you want are unique sounds to create your own sonic signature.



DESIGN

IDEAS

FX HATS

- 8" GX-8FXH
- 10" GX-10FXH



TRASH HAT

- 12"/14" GX-12/14TH

Benny Greb's
signature cymbal



X-TREME STACK

- 12"/14" GX-12/14XTS



JOHNNY RABB SIGNATURE MODELS

DRUMBALS

- 8" GX-8DB
- 10" GX-10DB



ELECTRO STACKS

- 8"/10" GX-08/10ES
- 10"/12" GX-10/12ES



THOMAS LANG SIGNATURE MODELS

FILTER CHINAS

- 8" GX-8FCH
- 10" GX-10FCH
- 12" GX-12FCH
- 14" GX-14FCH
- 16" GX-16FCH



JINGLE FILTER CHINAS

- 10" GX-10FCH-J
- 12" GX-12FCH-J
- 14" GX-14FCH-J



INNOVATION



MIPA Winner
Generation X

STYLES

Rock, Pop, Fusion, R&B, Reggae, Studio, World, Electro

TO CLEAN

MEINL Cymbal Cleaner



When what you want from your first set of cymbals are cool looks and cutting tones that sound great but won't break your bank account, MCS is a perfect choice. Precision crafted from pro-level bronze, these cymbals give you the cut you need to get your playing heard. Best of all, they let you add serious sounds to your set-up without a serious price tag.



METAL

B8
BRONZE

SHAPING
Pressure Point Technology

LAYHE
Wide Blade

FINISH
Traditional

SOUND
Bright, Powerful



SPLASH

10" MCS10S



CHINA

18" MCS18CH



HIHAT

Medium

14" MCS14MH



CRASHES

Medium

14" MCS14MC

16" MCS16MC

18" MCS18MC



CRASH-RIDE

18" MCS18CR



RIDE

Medium

20" MCS20MR



CYMBAL SET

MCS

14" Medium Hihat

16" Medium Crash

20" Medium Ride

HCS

These brass alloy models look and sound great, and let you get into playing MEINL at very realistic prices. We specialize in crafting cymbals from many types of metal, which is why you can play all types of pop or rock with HCS and your sound will be warm. We believe every drummer should play cymbals they feel good about.



MS63
BRASS

METAL

SHAPING

Pressure Point Technology

LAYHE

Wide Blade

FINISH

Traditional

SOUND

Mid-Bright, Warm



BASIC CYMBAL SET

HCS1416
14" Hi-Hat
16" Crash



COMPLETE CYMBAL SET

HCS141620
14" Hi-Hat
16" Crash
20" Ride

BELL

8" HCS8B



SPLASHES

8" HCS8S
10" HCS10S
12" HCS12S



TRASH CRASH

16" HCS16TRC



TRASH STACKS

12" HCS12TRS
14" HCS14TRS
16" HCS16TRS
18" HCS18TRS



CHINAS

12" HCS12CH
14" HCS14CH
16" HCS16CH
18" HCS18CH



HIHATS

13" HCS13H
14" HCS14H



CRASHES

14" HCS14C
16" HCS16C
18" HCS18C
20" HCS20C



CRASH-RIDE

18" HCS18CR



RIDE

20" HCS20R



CYMBAL BAGS



Benny Greb Artist Series Cymbal Bag

With two external compartments, shoulder strap, a second handle, cymbal dividers and much more, Benny's 22" bag is deluxe.

MCB22-BG



Pro Cymbal Bags

Ideal for gigging and touring, this bag has an external 15" compartment for splashes and hihats, cymbal dividers and a shoulder strap.

MCB16 up to 16"
MCB22 up to 22"
MCB24 up to 24"



Pro Cymbal Backpack

Free up your hands! This backpack design puts our 22" Professional Cymbal Bag (with added glow-in-the dark logo for dark stages) on your back.

MCB22-BP



Gig Cymbal Bag

Ideal for casual gigs, this bag has an easy-grip handle and holds cymbals up to 22".

MSTCB22



Percussion Backpack

The MEINL Percussion Backpack makes traveling with small percussion instruments a breeze.

TMPBP **NEW!**

CYMBAL CASES

Cymbal Cases Interior

Cushioned Contact Points

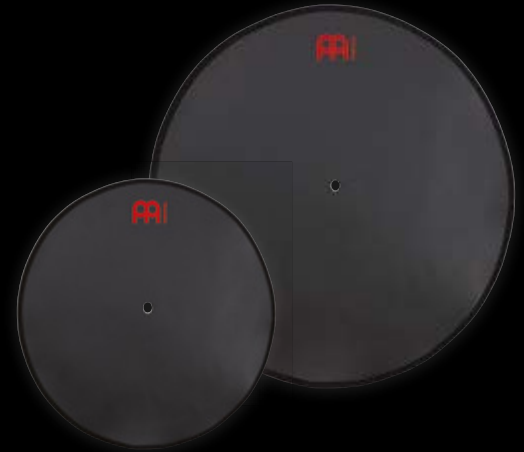


Pro Cymbal Case Trolley

A retractable handle and heavy-duty wheels let you pull your cymbals with ease instead of lifting and carrying them.

MCC22-TR

Bolted Center Rod



Pro Cymbal Case

This 22" hard-shell case is designed for heavy-duty protection, with a through-case center bolt capable of securing approximately 9 cymbals.

MCC22

Cymbal Dividers

These soft dividers protect your cymbals against metal-on-metal damage in any bag or case.

MCD-14 2pc 14" pack

MCD-22 2pc 22" pack

STICK BAGS & HOLDERS



Pro Stick Bags

With four sections for sticks and mallets plus a compartment for small tools and other drummer delights, these two padded nylon bags feature an external pocket, shoulder strap and hang straps.

MSB-1 Black
MSB-2 The Horns



Compact Stick Bag

The smaller brother of our Pro Stick Bag offers two sections for four pairs of sticks or mallets. The slim sized bag is perfect for being on the go and saving space.

MCSB



Deluxe Stick Bag

Feature-loaded with plenty of stick room, zippered clear-window pockets and two external pouches, you can carry this bag by handle or strap, and hang it on your kit with its elastic chord attachments.

MDLXSB



Designer Stick Bag

Four spacious stick sections plus room for drum keys and small tools make this a very complete stick carrier.

MSB-1-C1 Camouflage



Drumstick Holders

So you don't miss a beat when you drop a stick, clamp this holder to your hihat or cymbal stand so you can quickly grab a stick.

MC-DSH Black
MC-DSH-JB Jawbreaker

PRACTICE PADS

Develop speed, power and precision with MEINL rapid-rebound practice pads. Carry a 6" pocket-sized pad and work on your chops anywhere. Or put a 12" on your snare drum or lock it into a snare stand, so you can warm up at gigs without driving your band crazy. Every drummer should have at least one, two or three...



Thomas Lang
Artist Series Practice Pads

MPP-6-TL 6"
MPP-12-TL 12"



Benny Greb
Artist Series Masterpads

MPP-6-BG 6"
MPP-12-BG 12"



MEINL Practice Pads

MPP-6 6"
MPP-12 12"



Jawbreaker Practice Pads

MPP-6-JB 6"
MPP-12-JB 12"

Knee Pad Mount

The Knee Pad Mount is a genius tool for every drummer to practice everywhere. It allows you to strap most any threaded (8mm) practice pad to your knee.

MKPM Designed in cooperation with Benny Greb



Adjustable strap to secure in place



Adjustable strap to secure in place

4" Knee Pad

Develop speed, power and precision - anytime and anywhere - with the 4" Knee Pad. With a compact size and light weight, it comfortably sits on your knee and can be secured with the adjustable strap. It's the perfect way for drummers to practice on the go!

MKPP-4



DRUM RUGS

The MEINL Drum Rug is the ultimate for preventing drum creep. With its no-slip rubber bottom, tightly woven fabric top and great choice of graphics giving your set-up a more personalized vibe, it lets you sink your bass drum spurs and feel secure. And when the gig is over, roll it up, put it in its very own bag and away you go. 160cm (5.25') x 200cm (6.50')

**Oriental
MDR-OR**

**Jawbreaker
MDR-JB**

**Zebra
MDR-ZB**

**Black
MDR-BK**



Quick-Set Markers

To position your drums and hardware in their correct places every time, simply mark those places on your drum rug with Quick-Set Markers hook 'n' loop strips and circles.

60 strips for hardware
10 circles for drums

MQSM



With the E-Drum Rug it's possible to manage cables, plus ensure the rest of your kit and its pedals are securely set in place and will not move.

E-Drum Rug
Quick-Set Markers and
transportation bag included.
150cm (4.9') x 160cm (5.25')

MDR-E

DRUM GEAR



Dampen unwanted overtones



They also work great on cymbals



**A DROP OF HONEY
MAKES YOUR DRUMS
SOUND SWEET**

DRUM HONEY

The MEINL Drum Honey instantly transforms your drum sounds into a warm and sweet tone with practically no effort. They can be removed from any surface as needed.

Vital for session drummers and studio engineers as well as being used in houses of worship and venues where sound control is needed.

Drum Honey is washable by using a drop of dish soap and water. Let them air dry (no direct sunlight), and their stickiness will recover.

The MEINL Drum Honey is non-toxic.

MDH



Comes with storage box and 7 dividers



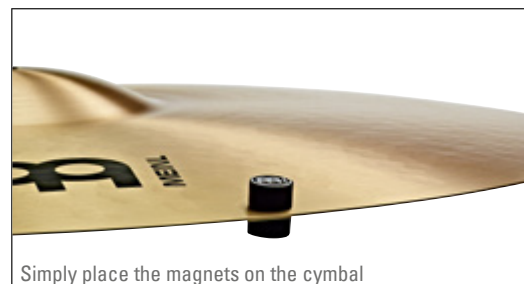
Cymbal Tuners

The MEINL magnetic Cymbal Tuners offer an easy way to tweak the sound of your cymbals. Simply place the magnets on the cymbal (mated up top and bottom). By positioning the Cymbal Tuners in different spots on the surface, you can control the sustain, dampen the tone, adjust the volume, and optimize the sound of your cymbal to just the way you like it.

MCT

2pc 16x4mm - light damping
2pc 16x9mm - heavy damping
With storage barrel

Designed in cooperation with
Benny Greb



Simply place the magnets on the cymbal

DRUM GEAR

Backbeat Pro Tambourines

The MEINL Backbeat Pro Tambourine features a blackened brass ring made from MEINL Cymbal alloy. Eight pairs of brass jingles are attached which enables any drummer to add tambourine to their snare drum. The ring is shaped to make contact 360 degrees around the drum for dynamic control while also having a raised edge for increased attack with rimshots.

13" in diameter
14" in diameter

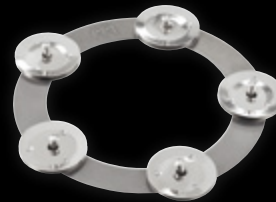
BBP13
BBP14



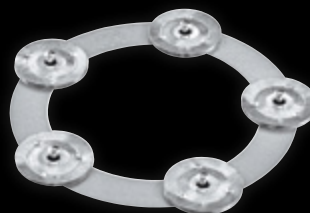
Adds tambourine to your snare drum

CHING RINGS

Incorporate a "ching" into your backbeats by placing the MEINL Ching Rings directly on your cymbals! The Dry Ching Ring will add a different touch to your playing by delivering a dry tambourine sound that blends perfectly with your beats. The Soft Ching Ring with its lightweight foam ring adds a soft "ching" to your cymbal hits.



CRING
5 pairs of stainless steel jingles, steel ring



DCRING NEW!
5 pairs of stainless zinc jingles, steel ring



SCRING NEW!
6 pairs of stainless steel jingles, foam ring



No drilling or rivets needed



Cymbal Bacon

Simply place the chain on top of your cymbal and make it sizzle. No drilling or permanent rivets needed. Easy to use on any cymbal stand.

BACON

DRUM GEAR



Drummer Gloves

Want a better grip so you avoid stick slip and blisters? Available with or without fingers.

MDG M, L, XL
MDGFL Fingerless M, L, XL



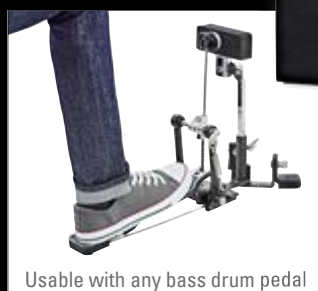
Mute your cymbals for quiet practicing

Cymbal Mutes

The MEINL Cymbal Mutes are made to fit over your cymbals and dampen the vibration. The soft material reduces attack and there is no sustain meaning you can practice for hours without disturbing close neighbors. Sold as individuals and sets.

14" Hihat (2pc.)	MCM-14
16" Crash	MCM-16
18" Crash	MCM-18
20" Ride	MCM-20

<u>Available Sets:</u>	
14"/16"/20"	MCM-141620
14"/16"/18"/20"	MCM-14161820

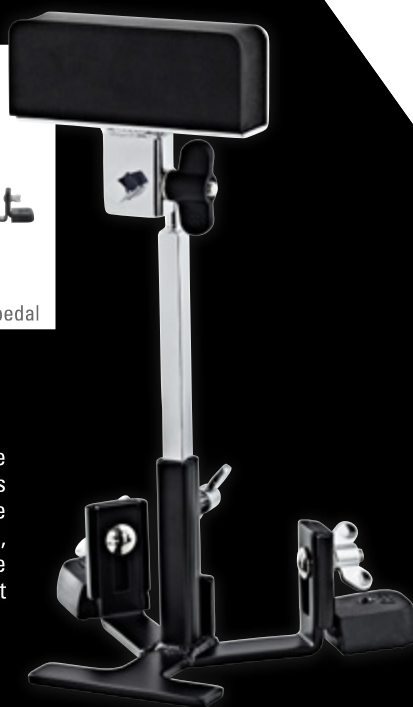


Usable with any bass drum pedal

Dynamic Pedal Pad

Advanced Bass Drum Pedal Practice Pad for Single or Double Kick that responds at any dynamic level. Whereas most bass drum practice pads are designed with only speed in mind - the Dynamic Pedal Pad goes deeper. It helps you develop control, independence and feel in addition to speed along with the dynamic response needed so you can clearly hear every note at any volume from very soft to very loud.

MDPP Designed in cooperation with
 Benny Greb

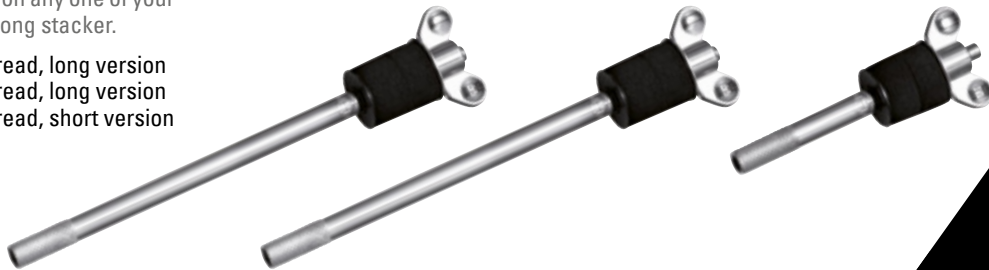


DRUM GEAR

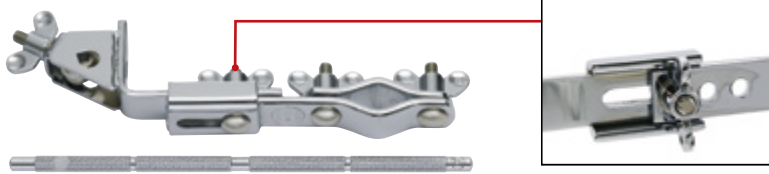
Cymbal Stackers

Double up the cymbals on any one of your stands with a short or long stacker.

- MC-CYS** 6 mm thread, long version
- MC-CYS8** 8 mm thread, long version
- MC-CYS8-S** 8 mm thread, short version



Multi Clamp, One Mount



With this length-adjustable clamp and rod you can position a timbale, cowbell, block or mountable tambourine anywhere within your set-up.

Includes straight rod

MC-1

Cajon Drum Set Stands

The MEINL Cajon Drum Set Stands allow you to build a small percussion or cymbal set around your cajon while keeping your stage footprint low-key.

Cajon Hi-hat Stand **CHS NEW!**



Cajon Cymbal Stand **CCS NEW!**



Cymbal Attachment

Add another cymbal to your set-up with this multi-clamp and boom-arm combo.

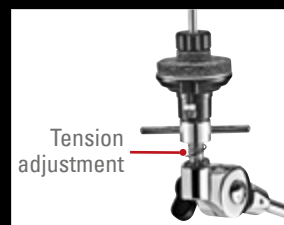
MCA



X-Hat Auxiliary Hi-hat Arm with Clamp

The MEINL X-Hat Auxiliary Hi-hat Arm keeps a pair of hi-hat or stack cymbals in a stationary position anywhere on a drum set-up. The clamp and boom arm make it easy to attach and position at any height or angle. The tension adjustment makes it possible to finely adjust the degree of opening of the top and bottom cymbal.

MXH

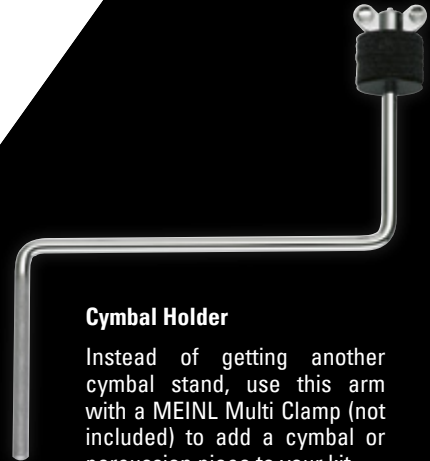


Tension
adjustment

Cymbal Holder

Instead of getting another cymbal stand, use this arm with a MEINL Multi Clamp (not included) to add a cymbal or percussion piece to your kit.

MC-CY



DRUM GEAR

Laptop Table

We have seen so many drummers using chairs and drum cases as tables for their laptops. We've also seen so many of those laptops fall to the floor. So we designed the Laptop Table. Featuring everything you need to keep your computer strapped down so it won't fall, it also keeps cables organized, keeps the computer cool and is height adjustable.

TMLTS



MOUNTABLE TABLES

Jawbreaker Percussion Table

Great for holding onstage accessories.

MC-PT-JB 18" x 12"



MC-PTXS 11" x 7"



MC-PTS 12" x 12"

Percussion Tables

Made from durable materials and offer enough room for all common drum gear instruments. The angle of the tables can be adjusted.

Flexible Microphone Gooseneck

The flexible MEINL Microphone Gooseneck provides easy mic placement on any drum or percussion instrument.

FMG NEW!



Mic Rim Clamp

The MEINL Mic Rim Clamp features the same sturdy and reliable mounting mechanism as the classic Rim Clamp but comes outfitted with added hardware for precise microphone placement on congas, drum kits, and marching percussion.

RIMCLAMP-M NEW!

Microphone Adapter

Transform your cymbal stand into a microphone stand by threading the MEINL Mic Adapter onto it.

TMMA NEW!

8mm threaded attachment



Professional Multi Clamp with Flexible Microphone Gooseneck

The MEINL Professional Multi Clamp with removable flexible microphone gooseneck has a 360-degree adjustable 3/8" standard rod mounting eye bolt, which gives you the ability to fine tune the placement of your mics on your rig.

TMPMC-G NEW!

CLEAN & PROTECT



MCCK-MCCL

Cymbal Cleaner & Cymbal Protectant



MCCK-MCP

Cymbal Polish & Cymbal Protectant

Cymbal Care Kits

Keep your cymbals looking like new using these cymbal care kits.

Both kits include **FREE** MEINL Cymbal Gloves.

Cymbal Cleaner

Ideal for cleaning Brilliant and Traditional finish cymbals.

MCCL



Cymbal Polish

Cleans and polishes Brilliant finish cymbals in one spray-and-wipe procedure.

MCP



Cymbal Protectant

Seals and protects cymbal surface.

MCPR



Cymbal Gloves

These unique gloves are made from 100% pure cotton for the express purpose of touching your cymbals without leaving fingerprints or oils on the cymbal's surface. Use these gloves anytime you are handling your cymbals at the gig, studio, or just at home.

MHS-WH NEW!



Cymbal Clock

Made from a real MEINL cymbal, this 10" clock will help you keep good time all the time. Hang this battery powered clock anywhere you want to be inspired to play drums. Second hand ticks at 60 bpm.

Requires one AA battery (not included)

MCC-10 NEW!





Candela

Creative and Exotic Sounds

The MEINL Candela cymbals have been specially developed to meet all of the requirements for today's modern percussionists. The Candela series features light, extra thin cymbals, which reveal their full sound potential when played by hand.

PERCUSSION SPLASH

10" CA10S



PERCUSSION HIHAT

10" CA10PH



PERCUSSION CRASHES

14" CA14C

16" CA16C



TIMBALES CRASH-RIDE

18" CA18CR



PERCUSSION JINGLE BELL

14" CA14PJB





Symphonic Cymbals

HANDCRAFTED MASTERPIECES

Entirely hand hammered from premium B20 Bronze in our Turkish Cymbal Smithy, these masterpieces satisfy the highest sonic requirements of orchestral music.



ACCESSORIES

HAND CYMBAL STAND

Strong and solid design with three double-braced legs. The two padded cymbal cradles are easily adjustable by a standard drum key. A shelf is added between the two cymbal cradles for different drum accessories.



TMHCS

SUSPENDED CYMBAL STAND

The Suspended Cymbal Stand is specifically engineered to support the cymbal as it swings freely in all directions, in order to produce its maximum sound. Designed to hold cymbals up to 24" in diameter. A cymbal stacker can be attached on top of the gooseneck for an additional cymbal.



TMSCS

LEATHER HANDLES

Made from the finest leather to satisfy the highest demands. Perfect grabbing a hold of quickly and recommended for orchestral applications.



BR1 (pair)

TUNING FORK 440 Hz

The Tuning Fork is made in Germany and tuned precisely to the Standard Pitch of 440 Hz. The tuning fork features an ergonomic shaped grip for comfort.



TF-440

SYMPHONIC CYMBALS

THIN

16" SY-16T
18" SY-18T
20" SY-20T
22" SY-22T



MEDIUM

16" SY-16M
18" SY-18M
20" SY-20M
22" SY-22M



MEDIUM HEAVY

19" SY-19MH



HEAVY

16" SY-16H
18" SY-18H
20" SY-20H
22" SY-22H



EXTRA HEAVY

20" SY-20EH
22" SY-22EH



SYMPHONIC SUSPENDED CYMBALS

SUSPENDED

14" SY-14SUS
16" SY-16SUS
17" SY-17SUS
18" SY-18SUS
20" SY-20SUS
22" SY-22SUS





MARCHING CYMBALS

- PROFESSIONAL RANGE - B12 AND B10 BRONZE

are used for the professional marching range. These professional sounding cymbal pairs are tonally matched.

- STUDENT RANGE - B8 BRONZE AND BRASS

is used for the student marching range. They are pressed into shape, are tonally matched and are the perfect choice for the ambitious beginner.



LEATHER STRAPS

PROFESSIONAL

Made from the finest leather for the ultimate in comfort. The strap has a soft surface and the pad provides excellent protection for the hands.



BR5 (pair)

STANDARD

Standard cymbal strap made from leather. It comes with a pad, which provides excellent protection for the hands.



BR3 (pair)

MARCHING

Specially designed marching leather strap made out of the finest thin leather with extra length in order to easily hold the cymbals in the traditional marching grip.



BR2 (pair)

PROFESSIONAL RANGE

B12

16" MA-B12-16M
18" MA-B12-18M
20" MA-B12-20M



B10

16" MA-B10-16M
18" MA-B10-18M
20" MA-B10-20M



ARENA

16" MA-AR-16
18" MA-AR-18



STUDENT RANGE

BRONZE

14" MA-B0-14M
16" MA-B0-16M
18" MA-B0-18M



BRASS

13" MA-BR-13M
14" MA-BR-14M
16" MA-BR-16M
18" MA-BR-18M



MEINL ONLINE

Thank you for your interest in MEINL cymbals. If you require more information, please visit our website or contact us directly.



meinlcymbals.com



facebook.com/meinlcymbalsfanpage



youtube.com/meinlcymbals



twitter.com/meinlcymbals



instagram.com/meinlcymbals



All features are subject to change without notice. Not responsible for typographic errors. No part of this catalogue may be reprinted, reproduced, or included in any online service in any form in whole or in part, without the prior permission of MEINL.

© 2019 Roland Meinl Musikinstrumente GmbH & Co. KG

ADVERTISING CONCEPT & DESIGN BY

WayneB MARKETING & MEINL

CONTENT & DIRECTION BY

Stefan Müller, Quentin Brandt, Udo Heubeck

PHOTOGRAPHY BY

Sebastian Jäger, Christian Habermeier
www.studio-waldeck.de

LITHOGRAPHY BY

Sven Mihm
www.mihm-werbung.de

GLOBAL HEADQUARTERS

Roland Meinl Musikinstrumente GmbH & Co. KG
Musik-Meinl-Straße 1
91468 Gutenstetten
Germany

US HEADQUARTERS

MEINL USA L.C.
3427 Ambrose Avenue
Nashville, TN 37207
USA

Printed in Germany M-CA301218





20 INCH LIGHT RIDE

20509



CYM-CATALOG19



8 42960 10246 8